

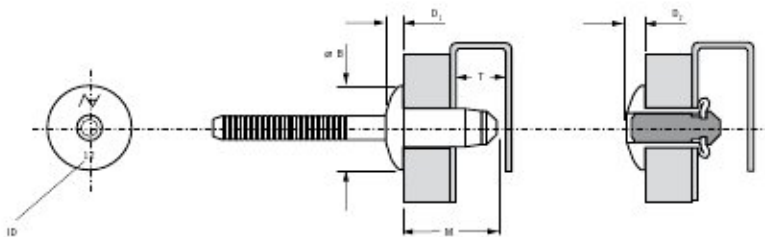
# Hemlok® 2221



For installation information please refer to the tooling overview and manuals on our website [www.avdel-global.com](http://www.avdel-global.com).  
 Pour les conditions de pose, merci de vous référer à la description de l'outil et aux manuels disponibles sur notre site Web.  
 Angaben zur Verbeitung entnehmen Sie bitte der Geräteübersicht und den Betriebsanleitungen auf unserer Website.  
 Per informazioni sull'installazione, preghiamo consultare i manuali e la panoramica degli attrezzi sul nostro sito web.  
 Para ver información sobre máquinas de colocación, consulte nuestra página web, a partir de la visión general de máquinas y manuales.

English	Français	Deutsch	Italiano	Español
Protruding head	Tête bombée	Flachrundkopf	Testa tonda	Cabeza alomada
Body: medium carbon boron steel* Zinc plated Clear trivalent passivated	Corps: Acier moyen carbone* Revêtement zingué Passivation claire trivalente	Hülse: Stahl* Verzinkt Klar passiviert, Cr6-frei	Corpo: Acciaio a medio tenore di carbonio* Zincato Passivazione chiara trivalente	Cuerpo: Acero medio en carbono* Zincado Pasivado claro trivalente
Stem: medium carbon boron steel* Zinc plated Clear trivalent passivated	Tige: Acier moyen carbone* Revêtement zingué Passivation claire trivalente	Dorn: Stahl* Verzinkt Klar chromatiert, Cr6-frei	Gambo: Acciaio a medio tenore di carbonio* Zincato Passivazione chiara trivalente	Vástago: Acero medio en carbono* Zincado Pasivado claro trivalente

\*: SAE 10B35, EN 10263-2 33B2/38B2



ø	Ø		Ø		ID	M	ø B	D <sub>1</sub>	T	D <sub>2</sub>	kN min.	kN min.	Part No/ref
	min.	max.	min.	max.									
6.4 (1/4")	1.50	3.50	6.7	6.9	12	13.7	13.4	2.7	12.2	3.4	10.5	8.8	02221-00812
	2.80	4.80			13	15.0					12.0		02221-00813
	3.35	5.35			14	15.6					12.5		02221-00814
	4.80	6.80			15	17.0					12.5		02221-00815
	6.80	8.80			17	19.0					14.0		02221-00817
	7.50	9.50			18	19.7					15.0		02221-00818
	8.80	10.80			19	21.0					16.0		02221-00819
	10.80	12.80			21	23.0					16.0		02221-00821

all dimensions in mm / en millimètres / alle Maße in mm / in millimetri / en milímetros

# Hemlok® 2241

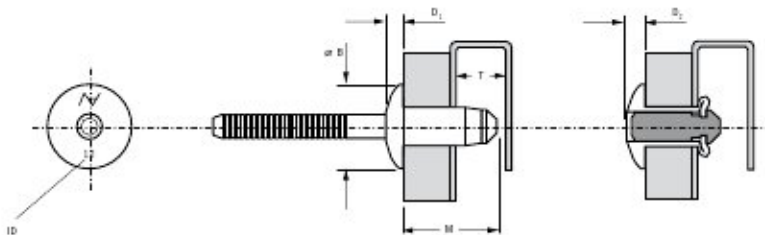


For installation information please refer to the tooling overview and manuals on our website [www.avdel-global.com](http://www.avdel-global.com).  
 Pour les conditions de pose, merci de vous référer à la description de l'outil et aux manuels disponibles sur notre site Web.  
 Angaben zur Verbeitung entnehmen Sie bitte der Geräteübersicht und den Betriebsanleitungen auf unserer Website.  
 Per informazioni sull'installazione, preghiamo consultare i manuali e la panoramica degli attrezzi sul nostro sito web.  
 Para ver información sobre máquinas de colocación, consulte nuestra página web, a partir de la visión general de máquinas y manuales.

English	Français	Deutsch	Italiano	Español
Protruding head	Tête bombée	Flachrundkopf	Testa tonda	Cabeza alomada
Body: Aluminium alloy* (2.5 % Mg) Natural	Corps: Alliage d'aluminium* (2.5% Mg) Brut	Hülse: Aluminium* (2.5 % Mg) Blank	Corpo: Lega di alluminio* (2.5% Mg) Nessuna finitura	Cuerpo: Aluminio* (2.5% Mg) Natural
Stem: Aluminium alloy** Natural	Tige: Alliage d'aluminium** Brut	Dorn: Aluminium** Blank	Gambo: Lega di alluminio** Nessuna finitura	Vástago: Aluminio** Natural

\*: EN AW-5052, AlMg2.5

\*\* : EN AW-7075 AlZn5.5MgCu



ø	Ø		Ø		ID	M	ø B	D <sub>1</sub>	T	D <sub>2</sub>	kN min.	kN min.	Part No/ref
	min.	max.	min.	max.									
6.4 (1/4")	1.50	3.50	6.7	6.9	12	13.7	13.4	2.7	12.2	3.4	5.0	2.67	02241-00812
	2.80	4.80			13	15.0					6.0		02241-00813
	3.35	5.35			14	15.6					6.2		02241-00814
	4.80	6.80			15	17.0					6.5		02241-00815
	6.80	8.80			17	19.0					7.0		02241-00817
	8.80	10.80			19	21.0					7.0		02241-00819
	10.80	12.80			21	23.0					7.0		02241-00821

all dimensions in mm / en millimètres / alle Maße in mm / in millimetri / en milímetros



An Acument™ Global Technologies Company

[www.avdel-global.com](http://www.avdel-global.com)

Hemlok® is a trademark of Avdel UK Limited

Avdel - Partner seit 1986



© 2007 Acument Intellectual Properties, LLC

01.2009

Data shown is subject to change without prior notice as a result of continuous product development and improvement policy.  
 Your local Avdel representative is at your disposal should you need to confirm latest information.